

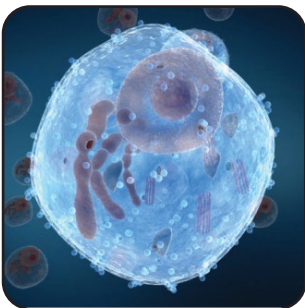
MARATHON PRODUCTS

DRY SHIPPER RENTAL SERVICE & COORDINATED SHIPPING SERVICES

Who Will You Trust with Your Embryos or Sperm?

Many companies, facilities and individuals do not have the necessary experience or the liquid nitrogen dry shipping dewars to meet the needs of shipping frozen embryos and sperm. To meet this need Marathon Products offers its Dry Shipper Rental Service and Coordinated Shipping Services for liquid nitrogen shipping.

Our unique advantages are the microDL-200® temperature data logger and the extended working time of our dry shippers. With the microDL-200 our dry shipper services give peace of mind with continuous, minute by minute, temperature monitoring.



MARATHON
PRODUCTS, INC.

Don't ship without us!®

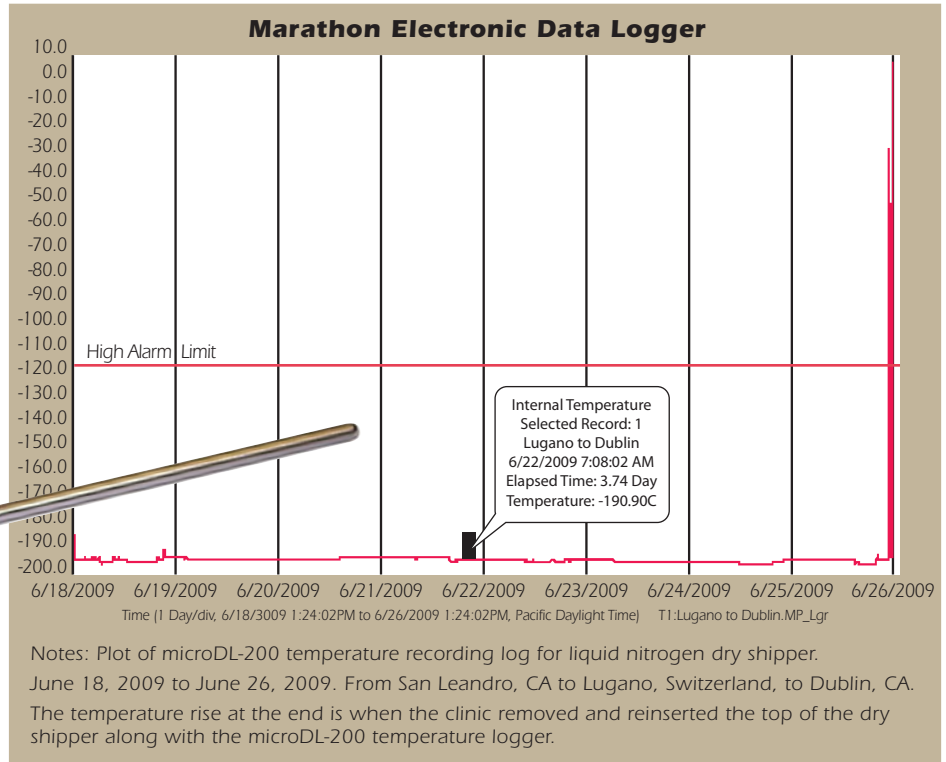
We include the microDL-200 data logger with each rental to record the temperature for the duration of each shipment. The compact sized microDL-200 gives assurance that your precious cargo has remained frozen and protected during transit. No one else can offer you continuous, detailed temperature data for the entire shipping time. At the end of each shipment we deliver a printed plot of the temperature data captured by the microDL-200.



Marathon Products offers safe and effective shipment of reproductive tissue that has been originally cryopreserved at another laboratory or cryobank. Marathon Products is committed to providing the physician and client depositors with quality services that fully comply with industry and government Standards and/or Regulations.

Our liquid nitrogen dry shippers are chosen for their ability to hold cryogenic temperatures for extended working time. More working time gives protection

An example plot of temperature data for an 8 day international shipment.



against unplanned events and delays, especially in international shipments. This means your specimens continue to be protected even if unforeseen events such as missed flights or customs holds delay your shipment while in transit. In any event, the microDL-200 will document the temperature of your specimen and let you know the status for the entire journey.

Marathon Products' dry shipper rental services give you options to ship your specimens.

Dry Shipper Rental Service

Marathon will rent the liquid nitrogen filled dry shipper and microDL-200 to you, and you handle all of the paperwork, shipping and logistics.

Coordinated Rental Service

Marathon will work with expedited shipping companies (e.g. FedEx, Quick International Courier, World Courier, etc.) to ship the liquid nitrogen filled dry shipper and microDL-200 and handle the paperwork, shipping and logistics.

Marathon will send you examples of the necessary forms, explain the shipping process, and communicate with the facilities involved. Timing is of the essence when shipping your reproductive specimens; therefore, Marathon is careful to have written consent from each facility so that the dry shipper receipt and transfer will take place in an efficient manner.

Deposits are refundable upon return of dry shipper, shipping case and microDL-200 in good condition.

Please call **1-510-562-6450 x607**
for more information or to schedule a shipment.

www.marathonproducts.com

627 McCormick St., San Leandro, CA 94577 ▪ jperry@marathonproducts.com