

MARATHON PRODUCTS, INC.

Ethernet Base Station Installation Lantronix

Firmware: Ver. 6.1.0.0
Software: Device Server Configuration Manager 1.3.0.0



Table of Contents

| | |
|--|----|
| 1 Installation | 3 |
| 1.1 Assigning Ethernet Base Station IP Address | 3 |
| 1.2 Setting Ethernet Base Station to Report Alarms | 5 |
| 1.3 Ethernet Base Station Settings (Lantronix) | 5 |
| 2 Technical Support | 17 |

1. INSTALLATION

1.1 ASSIGNING ETHERNET BASE STATION IP ADDRESS

Please note that you may need to get your IT department involved in the installation of the Ethernet base station.

The Ethernet base station has been preset to an IP address that is shown on the label on the back of the device.

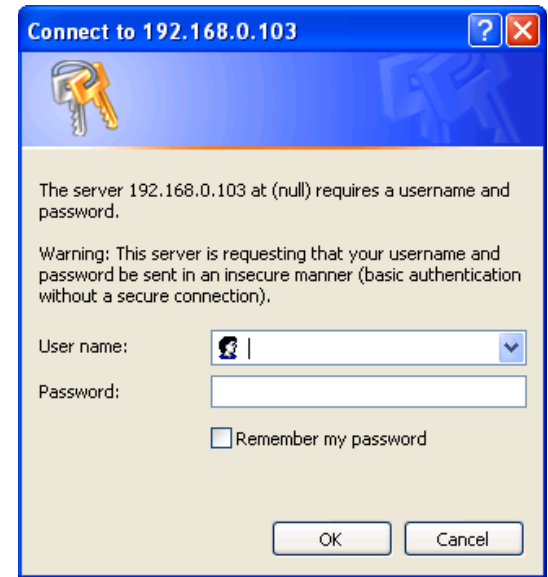
Default IP address: 192.168.0.116
TCP Port: 10001
Channel: 5
e.g. IP Address: 192.168.0.116 Port:10001

You may need to manually change this number if that IP address is not available, if it is already taken in your network, or if your network uses a different subnet.

If the IP address has already been taken.

Connect the Ethernet base station to the same local network as your PC, using the CAT5 cable.

1. Shut down the device or computer that has already taken that IP address.
2. Open your internet browser and enter `http://192.168.0.116` to access the Ethernet device settings.
3. You will be asked for a login and password. Just ignore by clicking OK. (see screenshot 1)

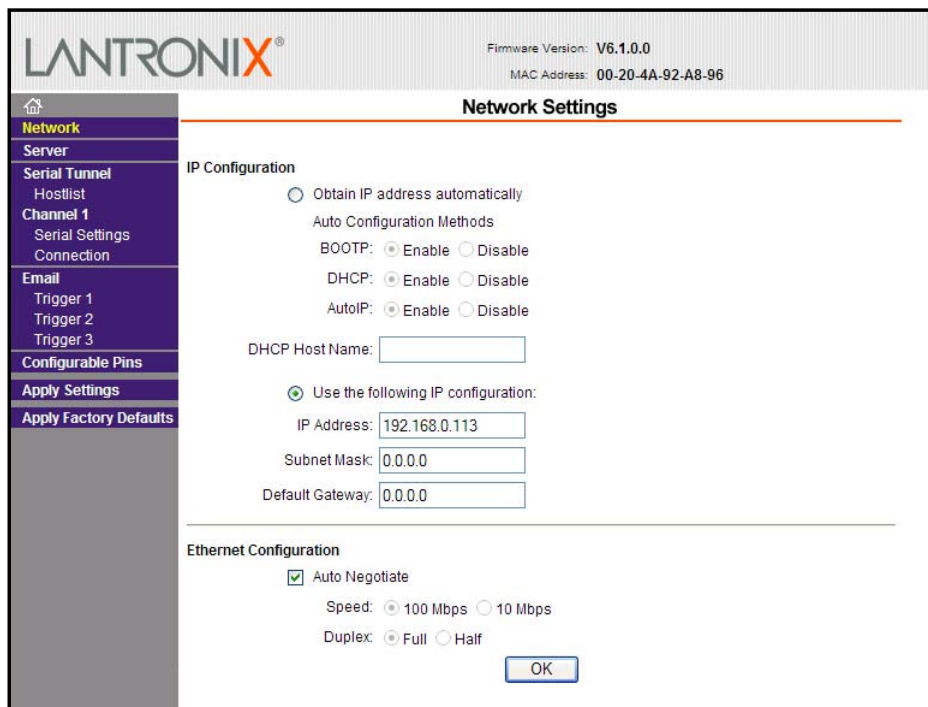


SCREENSHOT 1 – Connect to 192.168.0.103

4. You will see the Lantronix interface (see screenshot 2). Click on Network Settings. (see screenshot 3)



SCREENSHOT 2 – Lantronix interface



SCREENSHOT 3 – Network Settings

5. Change the IP address to a new IP address that is available. Click OK and Apply Settings.
6. Open your internet browser and open http:// 'new IP address' to confirm the access to the Ethernet device.
7. Write the new assigned IP address _____

If your network uses a different subnet.

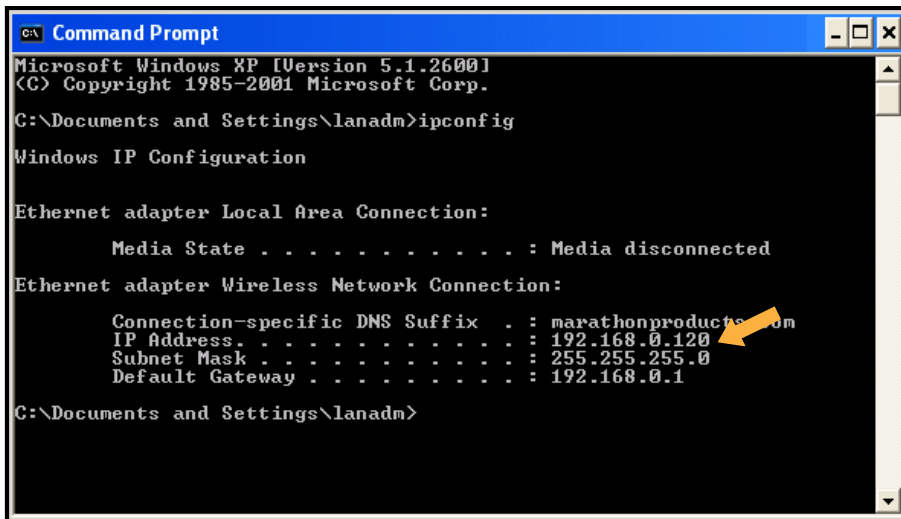
Connect the Ethernet base station to the same local network as your PC, using the CAT5 cable.

1. From the Windows Start button, go to Control Panel, Network Connection and then your Local Network Connection or Wireless Network Connection. Select Properties/Internet Protocol TCP/IP/Properties. Set the IP address to same Subnet as the Ethernet base station: e.g. 192.168.0.116
2. Open your internet browser and enter http://192.168.0.116 to access the Ethernet device settings.
3. You will be asked for a login and password. Just ignore by clicking OK (see screenshot 1 on page1)
4. You will see the Lantronix interface (see screenshot 2). Click on Network Settings. (see screenshot 3)
5. Change the IP address to a new IP address that is available. Click OK and Apply Settings.
6. From the Windows Start button, go to Control Panel, Network Connection and then your Local Network Connection or Wireless Network Connection. Select Properties/Internet Protocol TCP/IP/Properties. Go back to your default IP address.
7. Open your internet browser and open http:// 'new IP address' to confirm the access to the Ethernet device.
8. Write the new assigned IP address _____

1.2 SETTING ETHERNET BASE STATION TO REPORT ALARMS

Once you have decided which computer is going to be running the MDAS software and Alarm Monitor application, you will need to find the IP address of that computer.

1. From the Windows Start button go to your Programs, Command Prompt and enter ipconfig (see screenshot 4 on the next page).

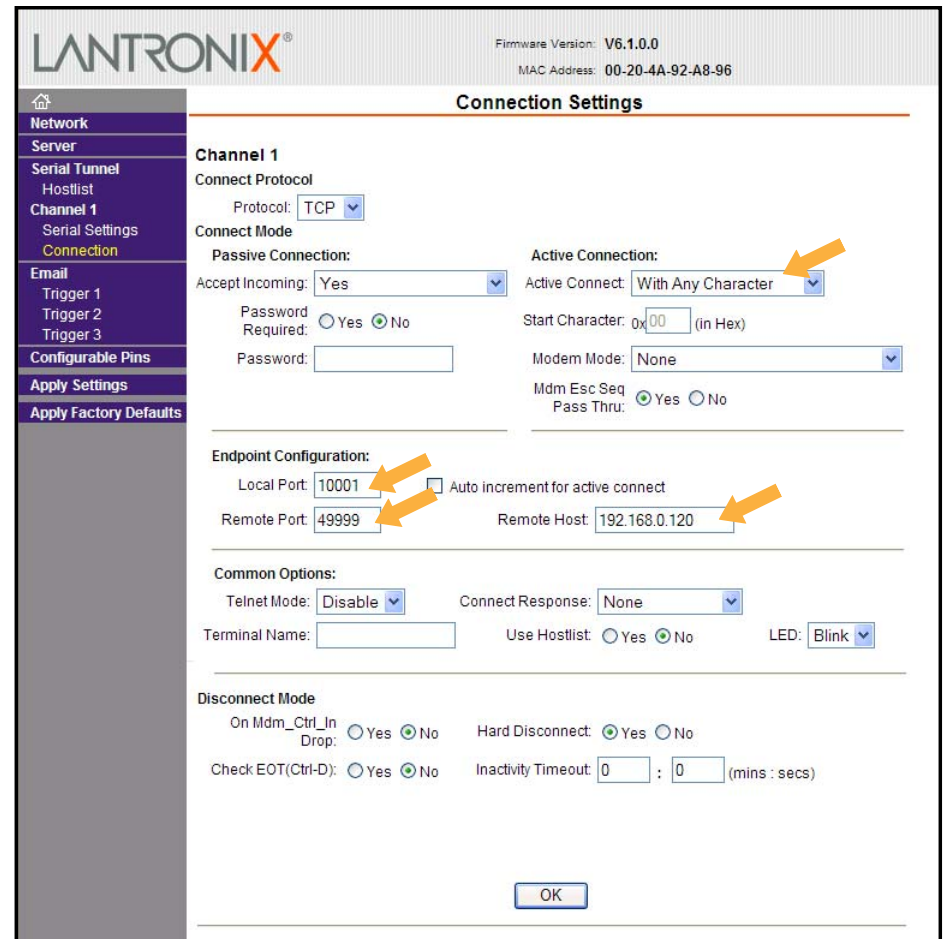


SCREENSHOT 4 – Command Prompt

2. Write the IP Address reported by Command Prompt
-
3. Open your internet browser and open 'http://your Ethernet Base Station IP Address' to confirm the access to the Ethernet device.
 4. You will be asked for a login and password. Just ignore by clicking OK (see screenshot 1).
 5. Click on Connection Setting (see screenshot 5).
 6. Set the following parameters:
 - Active Connections**
 - Active Connect: With Any Character
 - Endpoint Configuration**
 - Local Port: 10001
 - Remote Port: 49999
 - Remote Host: Your Computer IP Address
 7. Click OK and Apply Settings.

1.3 ETHERNET BASE STATION SETTINGS (LANTRONIX)

You may wish to click through the other screens to familiarize yourself with the available Ethernet base station settings for Lantronix. Except for the settings that we have specifically asked you to change in this guide, the default settings should remain unchanged.



SCREENSHOT 5 – Connection Settings

2. TECHNICAL SUPPORT

Please call Marathon Products, Inc at 1-800-858-6872 for Technical Support.

Troubleshooting information is available at http://www.marathonproducts.com/troubleshoot_1.html

There are alternative methods to install the Ethernet base station and assign the IP address. In some instances we may need to escalate your case to Lantronix technical support team:

Please call Lantronix Technical support at (800) 422-7044. For products category Press 1 and for product Press 1.

Our Ethernet base station is a UDS200 Lantronix device.

Lantronix procedure may require the use of a crossover cable that we have supplied along with base station accessories.